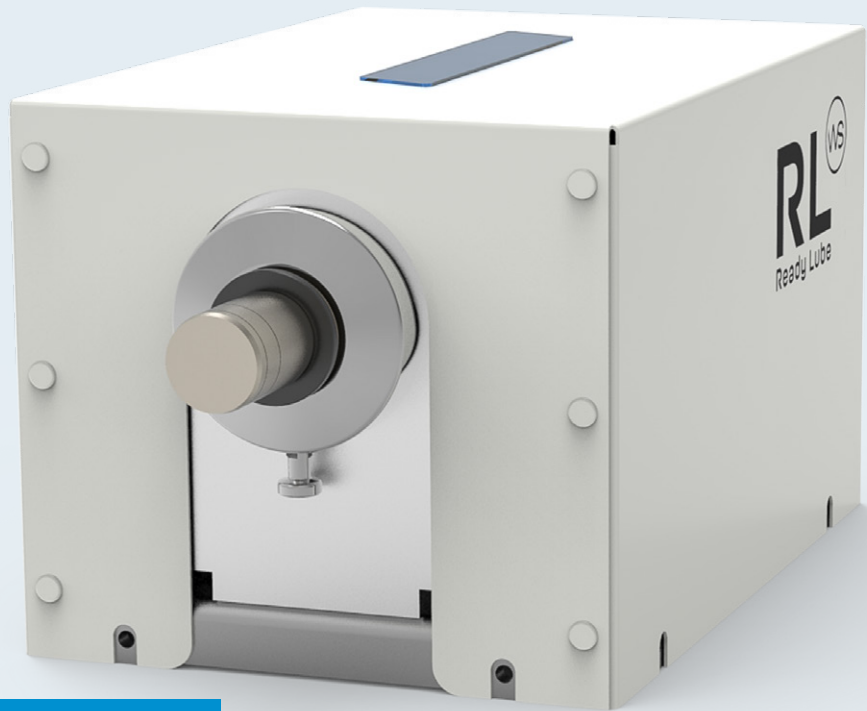


Available as
BASIC &
ADVANCED



dosing device ReadyLube: Dose!

Compact dosing unit for contact-based greasing and oiling of components in production and assembly processes.

RLD

Highlights/ Benefit

- Precise component lubrication:
Operator-independent and reproducible
- Cost-efficient: Economical even for small-series production
- Fast commissioning: Reduced setup times for a swift production start
- Resource-efficient: Optimized dosing minimizes media consumption
- Advanced process control: Optional integrated monitoring and control interfaces

Precise component lubrication – independent of the operator and reproducible. Plug. Press. Apply!

For consistent quality in greasing and oiling processes in production and assembly.

ReadyLube: Dose! is a standardized dosing unit for component-specific, contact-based lubricant application in industrial production processes. Lubrication is precise and reproducible – independent of the operator. This ensures consistent product quality, process reliability, and efficiency. Thanks to its compact design and autonomous operation, the unit can be seamlessly integrated into existing production lines and assembly stations. Once the media supply and compressed air are connected, ReadyLube: Dose! is immediately ready for operation.

A dedicated application head is designed for each component, ensuring precise lubricant delivery to the desired location via specialized lubrication channels. To apply the lubricant, the component is simply placed onto the application head or application mandrel, automatically triggering the dosing process. Within milliseconds, the lubricant is either selectively dispensed through bore openings at defined points or guided through a narrow gap geometry between the application head and the component using a forced gap, ensuring controlled distribution within the contact surfaces. The lubricant quantity can be individually adjusted. After dosing, the component is removed from the application head by lifting it off and can be processed immediately.

ReadyLube: Dose! is suitable for lubricating functional external surfaces of components, such as gears and joints, seals and O-rings, as well as hard-to-reach areas, including bores and bearing bushes, internal joints and threaded sections, or lubrication channels in assemblies. If required, the lubricant can be applied to both internal and external areas simultaneously.

Thanks to easily exchangeable application heads, the ReadyLube: Dose! dosing unit can be flexibly adapted for different component series. This makes it particularly cost-effective for small-series production and variable manufacturing processes.

In addition to the BASIC version, ReadyLube: Dose! is also available in the ADVANCED version, which features an optical status display for process monitoring as well as extended control options and interfaces for integration into higher-level control systems and step-sequence-controlled production lines.

Follow the QR-Code for additional product info



Technical Data

Inlet pressure
20 to max. 200 [bar]

Suitable media
Greases and oils

Media connection
12 [L]

Air connection
6 [mm]

Pneumatic pressure
4 to 8 [bar]

Dimensions (L x W x H)
326 x 185 x 156 [mm]

Dosing quantity
0,001 to 6 [cm³]

- 1) 0,001 - 0,02
- 2) 0,01 - 0,2
- 3) 0,1 - 2
- 4) 1 - 6

Additional ADVANCED Features

Integrated process monitoring with an optical display for readiness and OK/NOK notifications

Schnittstellen
3 digital outputs [24 VDC]
1 digital input [24 VDC]

Triggering via external start signal possible