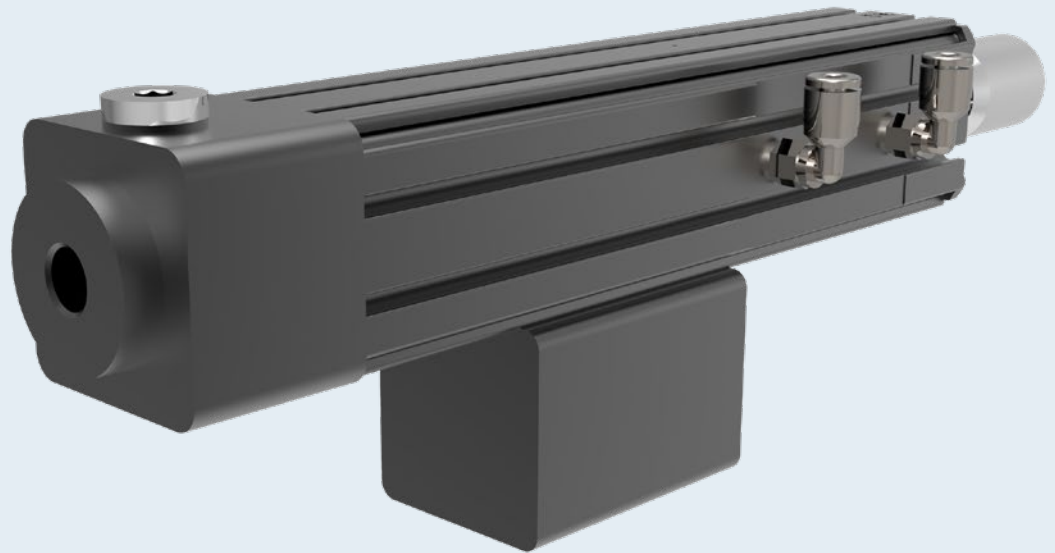


Available in  
4 different sizes



## WDV Volume- Dosing Valve

Exact application of media  
in a dosing range of 0 to 6 ml  
with precise quantities

**WDV**

### Highlights / Benefit

- Highest process safety  
also for smallest dosing volumes
- Suitable for inlet pressures of up to 200 [bar]
- Optional realization of a process control  
in connection with the WALTHER  
Valve Controller

# Controlled pressure and exactly dosed (smallest) quantities even for complex media

The volumetric Dosing Valve WDV:  
your guarantee for highly precise results.

Highest process safety and a consistent and clean application: With the volumetric Dosing valves of the WDV series, you can exactly and precisely apply viscous media with a defined dosing quantity onto your components. Thanks to a precise and clean application and highest repeatability, you will save with every dosing. Particularly for complex, costly media such as special lubricants which can be processed with the WDV valves in NLGI consistency ranges of 0 to 3. The dosing quantity of a volumetric dosing valve can be continuously regulated via a regulating screw in the given dosing range; an external 5/2-way valve is used for controlling. Dosing valves of the WDV series are characterized by a high reliability and little maintenance effort: modern sealing elements such as Glyd rings guarantee a long lifetime even with high inlet pressures of up to 200 bar or media with particles.

Follow the  
QR-Code for  
additional  
product info



## Technical Data

Inlet pressure (pneumatic)  
5,0 to 8,0 [bar]

Inlet pressure (medium)  
5 to 200 [bar]

Dosing quantity  
VAR „002“: 0 to 0,02 ml  
VAR „020“: 0,01 to 0,2 ml  
VAR „200“: 0,1 to 2 ml  
VAR „600“: 1 to 6 ml

Weight  
VAR „002“: 0,180 [kg]  
VAR „020“: 0,182 [kg]  
VAR „200“: 0,868 [kg]  
VAR „600“: 0,891 [kg]

Dimensions (L x W x H)  
VAR „002“ 135 x 23 x 51 [mm]  
VAR „020“ 135 x 23 x 51 [mm]  
VAR „200“ 246 x 36 x 77 [mm]  
VAR „600“ 246 x 36 x 77 [mm]

## Optional / Accessories



**Valve-Controller**  
Valve control



**Dosing piston sensor**  
Process control



**Pressure sensor**  
Valve pressure monitor



**5/2-way valve**  
Control element



**Temperature controller**  
Temperature adjustment



**Heating plate**  
Valve heating



**LuerLock adapter**  
Nozzle extension



**LuerLock dosing tip**  
Application image



**Tool set**  
Valve maintenance



**Cleaning kit**  
Valve cleaning