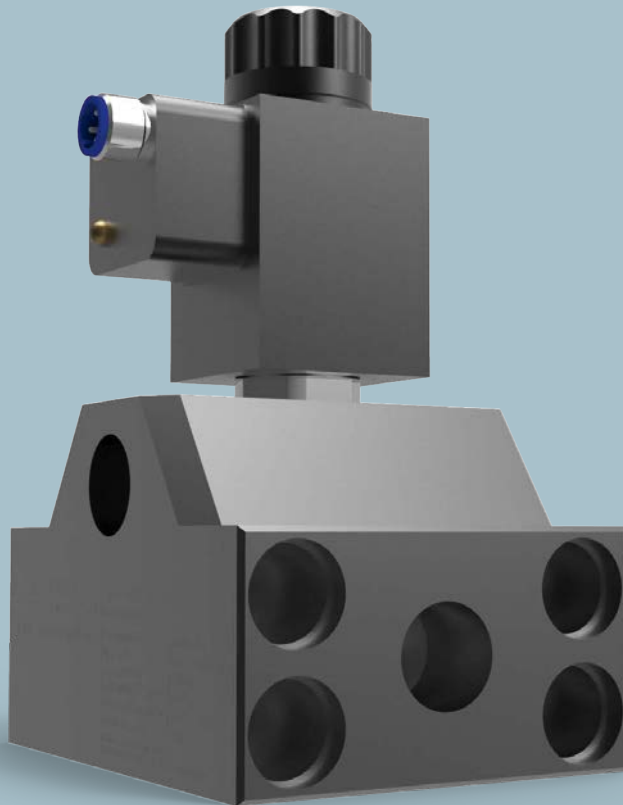


SUPPLYING.
DOSING.
APPLYING.

WALTHER
SYSTEMTECHNIK

WGV-32-01

3/2-WAY POPPET VALVE



WGV-32-01:
The ideal supplement
for designing and
extending medium-
supplying line
systems.

- Reliable control and diverting of medium flows
- Entirely electric control
- Fast switching times, high switching frequencies
- Compact, robust and low in wear



PRODUCT INFORMATION

OPTIMUM FLOW VALUES, FAST SWITCHING TIMES, HIGH SWITCHING FREQUENCIES

THE 3/2-WAY POPPET VALVE WGV-32-01: DESIGNED FOR HIGHEST PRECISION AND RELIABILITY.

Be able to control the medium flow with reliability. Stop it or unlock it, divide it or decouple certain line areas with different requirements for cycle, volume flow or pressure. Or simply redirect certain medium flows; whether for a material pressure relief of the system or for maintenance work or for a change of direction. The WGV-3/2-01 offers your manifold options for an individual and optimum design or extension of your system. It has with two separate medium outlets and two switching points. In normal mode, it is spring-reset open in the flow direction, and the side junctions are closed. By changing the switch position, the volume flow is redirected to the side junctions. The electrically con-

trolled valve does not need compressed air and can be integrated into existing systems with minimum space requirements. The way-valve was designed for low to highly viscous media and for pressures up to 200 bar. It is robust, low in wear and can be used for medium temperatures from 4 to 55 °C.

As a module of the Modular Series, the 3/2-Way Poppet Valve WGV-23-01 has a compact design, can be easily installed and can be integrated in any dosing and application system. Above that, flanging it to other modules of the series is fast and easy.

TECHNICAL DATA

Product description	WGV-32-01
Allowed operating pressure	200 [bar]
Switching time and frequency	50 - 60 ms; 2000/h
Volume flow	bis zu 20 l/min (NLGI 2)
Material connection	G1/2" (in/out)
Supply voltage	24 [VDC]
Allowed operating temperature	4 - 55 [°C]
Weight	1,5 [kg]
Dimensions (L x B x H)	102 x 143 x 92 [mm]